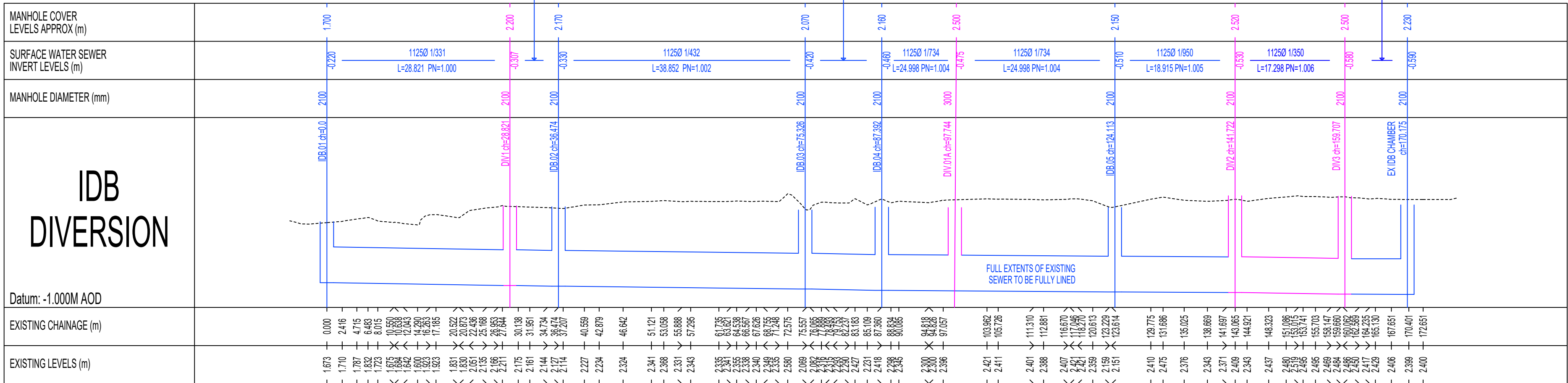
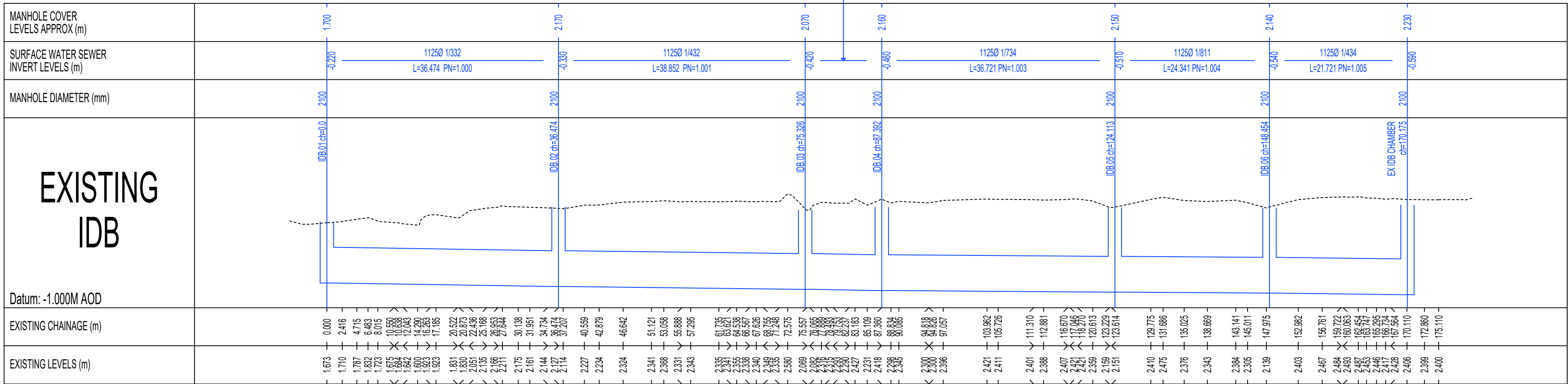
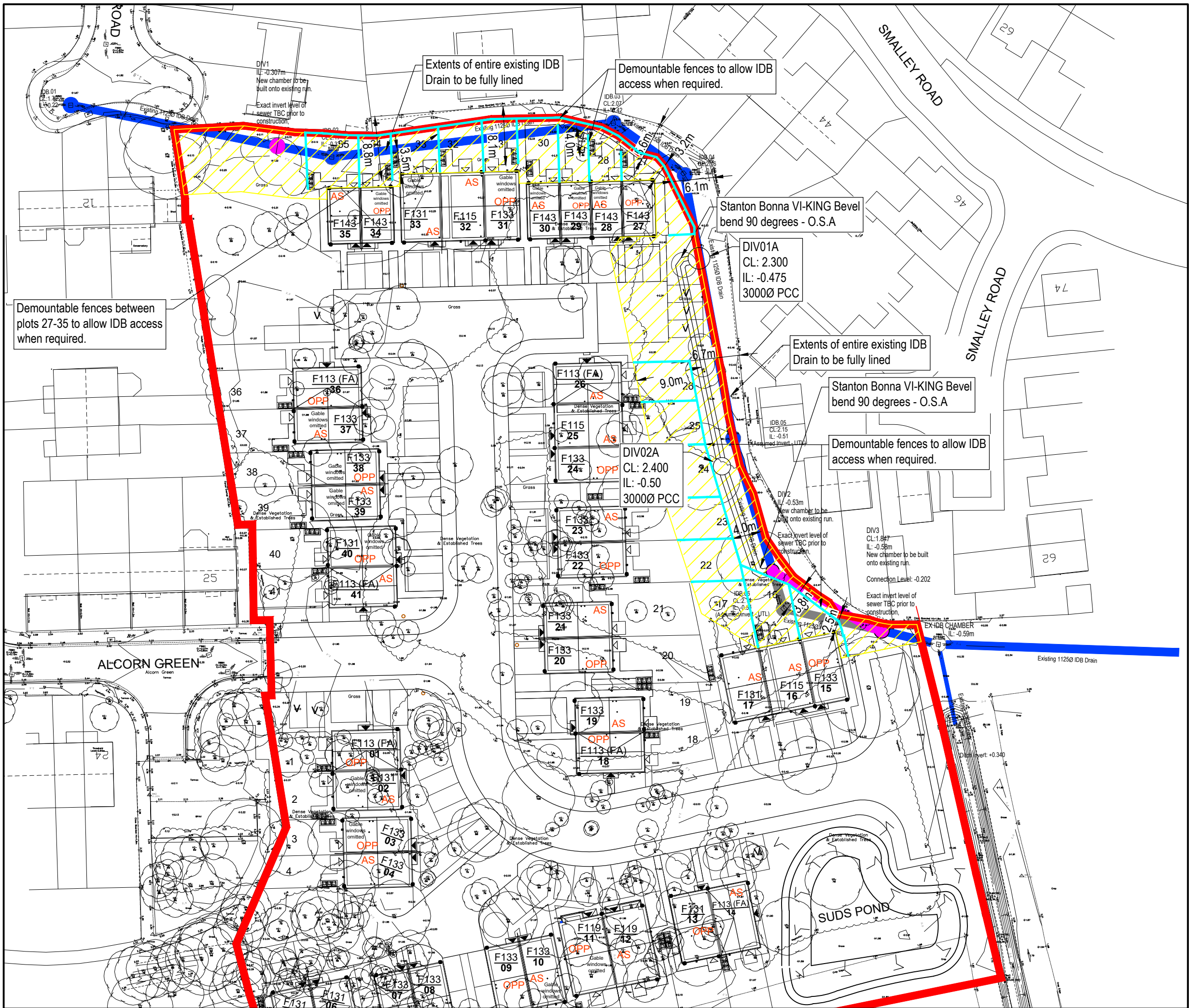


Manhole Number	Cover Level	Connections	Pipe			Manhole Size	Types	
Coordinates	Depth To Soffit		Code	Inverts	Diams		Manhole	Cover
DIV1	2.200		1 EXISTING	-0.307	1125			
E. 534456.133 N. 343629.565	1.382		0 EXISTING	-0.307	1125	2100	B1/E	D400
DIV2	2.520		1 EXISTING	-0.530	1125			
E. 534523.994 N. 343571.378	1.925		0 DIVERSION	-0.530	1125	2100	B	D400
DIV3	2.500		1 DIVERSION	-0.580	1125			
E. 534538.941 N. 343563.202	1.955		2 1.007	-0.202	150	2100	B	D400
DIV.01A	2.500		1 DIVERSION	-0.475	1125			
E. 534513.923 N. 343614.187	1.775		2 1.007	-0.475	1200	3000	B	D400
DIV.02A	2.400		1 DIVERSION	-0.500	1200			
E. 534517.074 N. 343585.698	1.700		0 EXISTING	-0.500	1200	3000	B	D400

NOTE:

COORDINATES BASED ON  
TOPOGRAPHICAL SURVEY 19251-J REV  
B RECEIVED 22.05.2020. CONDUCTED  
BY CHILCOTE ENGINEERING SERVICES.

EXACT INVERT OF EXISTING IDB  
SEWER TO BE CONFIRMED PRIOR TO  
CONSTRUCTION.



INFORMATION WITHIN THIS DRAWING IS NOT NECESSARILY PRODUCED TO SCALE.  
ALWAYS USE FIGURED DIMENSIONS AND CO-ORDINATES - IF IN DOUBT, ASK.

NOTES

- All pipes shall be either:  
A- PVC to have BSI kitemark status (certified to WIS 4-35-01) Wavin or similar approved. Maximum pipe length to be 3m. Plastic channel sections in manholes are not acceptable, clay channel sections shall be used.  
OR  
B- Class 120 concrete (54kN/m minimum) to BS 5911.
- Pipes of different diameters entering manholes should be installed with soffits at the same level.
- All adoptable sewer works and materials to be in accordance with "Sewers for Adoption" (6th edition), the relevant British/European standards and Anglian Water standards/requirements/addendum and be kitemarked.
- All manhole covers to be 675x675 cover and frame to maintain 600x600 clear opening, unless otherwise stated, in accordance with BS EN 124 Class D400 and embossed FW or SW as appropriate, where applicable.
- Pipes entering manholes and road gullies shall have a flexible joint within 600 of the inside the manhole or gully joining with a short rocker pipe.
- Plastic channel sections in manholes are not acceptable and clayware is preferable. Plastic channels are difficult to set in concrete and a satisfactory finish cannot be obtained on the benching.
- The adoptable sewers should be a minimum of 1m and manholes 0.5m from kerb faces and service margins.
- Sewers must have 5m clearance from trees and hedges (see also figure 2.3 in "Sewers for Adoption" 6th edition for restrictions on tree planting adjacent to sewers).
- Sewers to be laid on a class S bedding (150mm granular bed and surround). Where depth of cover to top of sewer is less than 1.2m in highways and verges (or less than 0.9m in none vehicular access areas), a concrete slab is to be provided above the granular bed and surround.
- All trenches in roads and paved areas shall be backfilled with Type 1 DOT granular sub-base material, or other granular material approved by the highway authority.
- Filled ground must be filled and consolidated under the supervision and to the satisfaction of Anglian Water before any sewer works are carried out.
- Sulphate resistant cement (C20/OC2) and precast concrete products must be used or a laboratory report provided proving that such precautions are not necessary.
- The invert levels at the proposed points of connection to existing public sewers shall be checked before any new drains are constructed. Any variation to the levels shown on the drawing shall be notified to Eastwood & Partners.
- The chamber size of manholes with more than one connection in them may need to be increased by an increment to accommodate the connections and bends.
- Cover levels are indicative only. Covers to be set to suit camber/gradient of existing and proposed roads.
- No land drainage is to connect to the public sewers, either directly or indirectly.
- Any land drain or watercourse on site to be diverted so as not to pass under proposed buildings. Diversion to be approved and inspected on site by the Local Authority.
- Cover slabs must carry the BSI Kitemark or will be rejected by the Anglian Water inspector. Where the clear opening of the Kitemarked product is different to that of the cover and frame, a load bearing slab should be fitted above the cover slab to bring the size down to 675x675, refer to CPAA Technical Bulletin issued autumn 2004 for Kitemarked cover slab opening sizes.
- Type B manholes are preferred with minimum 1200mm concrete with the opening sided over over the channel where maximum depth from cover level soffit of the pipe 3.0m and the chamber height is a minimum of 900mm.
- Demarcation chambers to be a min. 450mmØ chamber for 150mmØ foul and surface water pipes up to 1.2m deep. For depths greater than 1.2m, restricted access opening to 350mm is required for health and safety reasons.
- Any connection into an existing Anglian Water Sewer should only be made following the submission of a completed application form and method statement for Anglian Water approval. This must be provided giving 21 days notice of the intention to connect to the public sewer.
- Any lateral connections to a storage tank or storage manhole should be connected above the 'springing level' or via a 'backdrop' into the manhole.
- Catchpits shall not be adopted.
- Infill covers and frames shall not be used.
- Easements to be 2.5m either side of pipes up to 3000, 5m either side of pipes greater than 3000.
- Protective concrete cover slabs to be used on pipes in non traffic area which doesn't achieve 900mm coverand 1200mm cover in traffic area.
- Where pipe crossing, plastic membrane to be used for protection to eliminate any chances of cross contamination.
- PRECAST CONCRETE MANHOLE RINGS WILL NOT BE CUT UNDER ANY CIRCUMSTANCES. OTHER OPTION, MANHOLE BUILT UP WITH CONCRETE OR BRICKWORK TO THE TOP OF THE PIPE.
- Cover and frames should be kitemarked.
- No backdrops to be used, steeper gradients are preferred to the use of backdrops.
- The materials to be used are to be suitable for the ground conditions.
- In situations where traffic loading is anticipated to be heavier than would occur on a typical residential estate distributor road (i.e. braking or turning near a junction) a higher specification cover (E600) should be used.

E	IDB easement amended at client request	JLH	JLH	19.04.2021
D	Amended to suit agreed IDB design criteria	JLH	JLH	24.03.2021
C	Protected Zone added. Distance from pinch points added. DIV2 moved and pipe 1.006 updated.	BJM	JLH	02.12.2020
A	First Issue.			
REV	DESCRIPTION	SIG	CHK	DATE

PARTNER CONSTRUCTION

ALCORN GREEN, BOSTON

IDB DIVERSION LAYOUT

**Eastwood & Partners**  
CONSULTING ENGINEERS  
St. Andrew's House  
23 Kingfield Road  
Sheffield  
S11 9AS  
Tel 0114 255 4554  
Fax 0114 255 4330

mail@eastwoodandpartners.com  
www.eastwoodandpartners.com

SCALE WHEN PLOTTED AT A1			DRAWING STATUS		
1:100VER & 1:500HOR			PRELIMINARY		
DRAWN	CHECKED	DATE	DRAWING NUMBER	REV	
BJM	JHL	15.09.2020	45115/032	E	